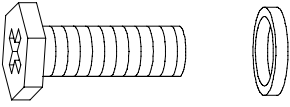
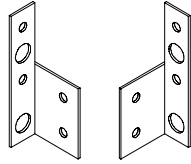


TODDLER BED CONVERSION

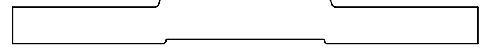
This conversion can be done with the purchase of our Conversion Rail Kit.
Crib shown is for illustration purposes and may not reflect the model of your crib.



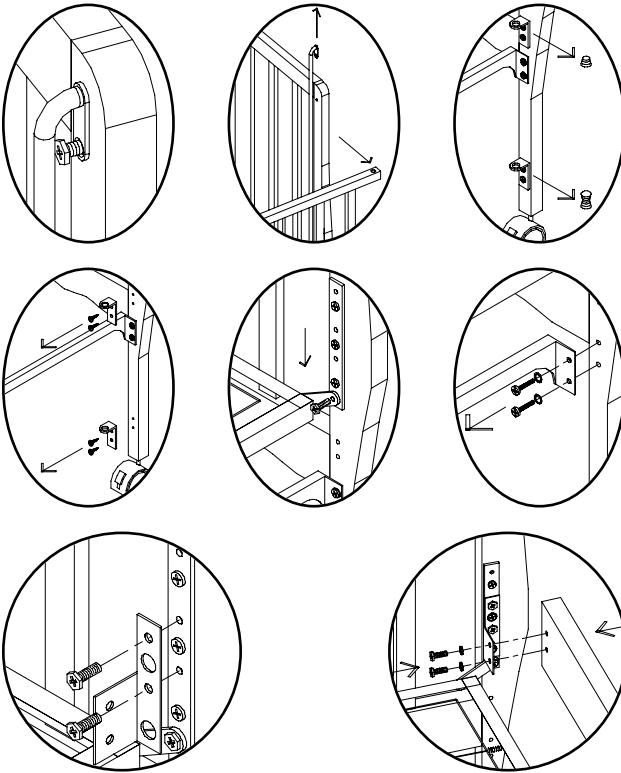
A 8 x allenhead bolts & washers



B Guard rail brackets



C Guard rail



1 Take off the hexagon head bolts on the top of the crib rods. Pull out the crib rods and remove the drop side. Remove the conical springs and bumper springs.

2 Detach the rod angles on the crib corner post by unscrewing the 5/8" wood screws. Move the spring frame to its lowest position. Remove the 7/8" machine bolts, the washers, and the stabilizer bar.

3 Attach a guard rail bracket **B** to each post bracket on the drop side with 2 hexagon head bolts and washers **A**.

Make sure that the leg of the guard rail bracket is facing the inside of the crib.

4 Attach the guard rail **C** to each bracket **B** by using 2 hexagon head bolts and washers **A** from inside of the crib.

Make sure the guard rail is on the outside face of the crib.

5 Recheck all screws and bolts to be sure they are fastened securely.

Do not overtighten.

6 Your toddler bed is now ready.

